



Our new Biomass boiler provides unlimited heating and hot water

# Environmental Responsibility

At Hartsop Fold we are privileged to be in one of the most beautiful parts of the Lake District and we take our stewardship very seriously and are keen to minimise our impact on the local area and the environment.

As part of our £400,000 refurbishment we have installed a large, state-of-the-art Biomass boiler which provides an environmentally sound heating solution to the lodge park. The new boiler provides unlimited heating and hot water to all the 12 lodges in a very efficient and eco-friendly way.

Biomass is classed as carbon-neutral renewable energy because it burns wood pellets which emit the the same amount of carbon dioxide as was absorbed while the trees were growing.

We also encourage our guests to recycle where possible and have a dedicated recycling area on the site.

Our lodges have been fitted with low energy LED lightbulbs and all the lighting around the site at night is designed to be energy-efficient and non-intrusive. That means that you can enjoy the star-gazing available on clear nights because of the lack of light pollution!

During our refurbishment we used where possible locally-sourced labour and materials, including slate from a local quarry.



Hartsop Fold Holiday Lodges, Hartsop, Patterdale, Cumbria CA11 0NZ

**For enquiries and bookings:**

Lyon Leisure, Old Quarry Lodge,  
Flusco, Penrith, Cumbria CA11 0JB  
T: 07917 784977 // E: info@hartsop-fold.co.uk  
[www.hartsop-fold.co.uk](http://www.hartsop-fold.co.uk)



# HARTSOP FOLD HOLIDAY LODGES

PATTERDALE, CUMBRIA





# Warm, welcoming and tranquil

Imagine a place where some of the most beautiful countryside and breathtaking fells are, quite literally, on your doorstep.

Imagine a place where you can explore the wildness and isolation of nature, but return home to a warm and comfortable lodge that has all the facilities you need after a day of walking, biking or sight-seeing.

Imagine a place where you can enjoy summer evenings on your veranda, or settle down to a warm and cosy welcome in winter, and watch the stars and abundant wildlife from your doorstep.

We offer comfortable holiday or short break accommodation in an idyllic Lakeland setting. Our aim is to enable you to enjoy Lakeland as much as we do.

Hartsop Fold is located in a quiet location between Brotherswater and Ullswater in the heart of the Lakes.



# The Lodges

Following a major refurbishment our 12 Scandinavian-style wooden lodges are now even more comfortable.

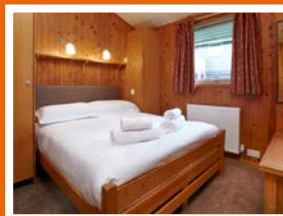
## New for 2015 we have:

High quality kitchens – all kitchens have been completely refitted with new units, slim-line dishwasher, ceramic hob, fan oven and extractor fan.

Living/Dining area - Our new oak dining table seats six, and brighter LED lighting has been fitted. All lodges now have a 2 berth sofa bed to allow up to a total of 6 guests. There are new 32 inch flat screen televisions in all lodges, plus DVD player and separate Bluetooth music player to enable you to sync your iPod or MP3 player and enjoy your own music

Upgraded heating – our new biomass boiler can provide unlimited heating and hot water so that when you come off the fells, you can be assured there will be a hot shower waiting for you and a cosy warm lodge to relax in! All water and heat is included.

Bedrooms – have been redecorated and upgraded to include one double room and one twin room with full-size single beds (no bunk beds)



Bathrooms have heated towel-rails and new walk-in showers

New reception and laundry building – where you can find out local and site information, use a pay phone, have some quiet time to do some work on your laptop or use our coin-operated washing machine and drier (please bring your own washing powder)

The veranda area has been extended to double the size of the outdoor seating area so you can eat al fresco and make the most of the wonderful views from your lodge.

Walkers, runners and cyclists can make the most of our new secure heated storage cupboard in each lodge where you can dry boots, fell shoes, coats and other outdoor clothing ready for your next excursion into the mountains

There is a recycling area for rubbish and a useful washing area at reception to clean up your muddy walking boots and bikes.

The high specification of these lodges provides good insulation, keeping the inside cool in summer and warm in winter.

Pets are welcome, by prior arrangement except in lodges 7, 8 and 10.



Call us today on **07917 784977**  
for more information or to make a booking.

